

M.C-51

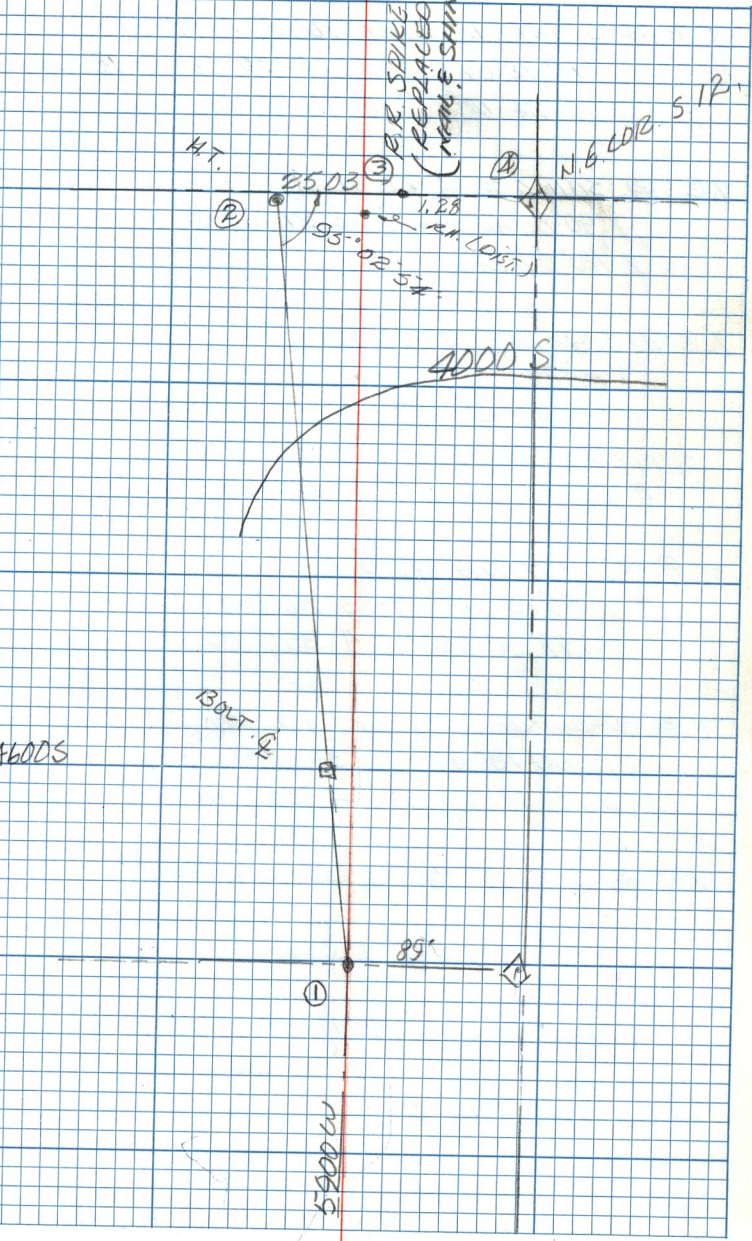
28 MAY 1981

JRC

177 H.

(35)

5900 W 4000 S - 4200 W



B.R. SPIKE
REPLACED
(NAME & SHINER)

N.E. COR 512+

47.

2503

(3)

(4)

(2)

1.28

95°

OR 54'

4000 S

BOLT 1/2"

4600 S

85'

(1)

5900 W